



# THE POWER OF PARTNERSHIPS

**Galveston-Houston Forum**  
**Museum of Fine Arts, Houston**  
**July 29, 2011**

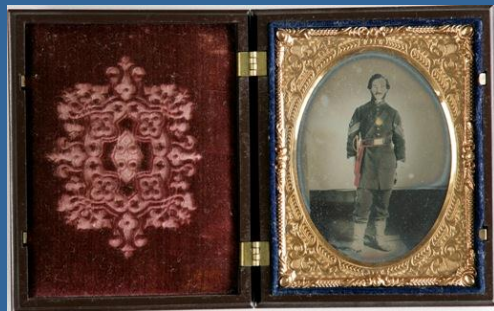
Heritage Preservation  

---

*The National Institute for Conservation*

# Cultural heritage can be found in:

- Libraries
- Museums
- Historical societies
- Monuments
- Historic buildings
- City archives
- Zoos
- Arboreta







American museums, libraries, archives, historical societies, and scientific research organizations are visited **2.5 billion** times a year.



Over **4.8 billion** artifacts are held in the public trust by more than **30,000** cultural heritage institutions in the U.S.

**Collections are vulnerable, valuable, and sometimes irreplaceable.**





# Did you know?

**80%** of cultural heritage institutions in the US do **not** have an emergency plan with staff trained to carry it out.



# Who are Emergency Responders?

State emergency management

Local emergency management

Federal Emergency Management Agency

Firefighters

Law Enforcement

Emergency Medical Technicians

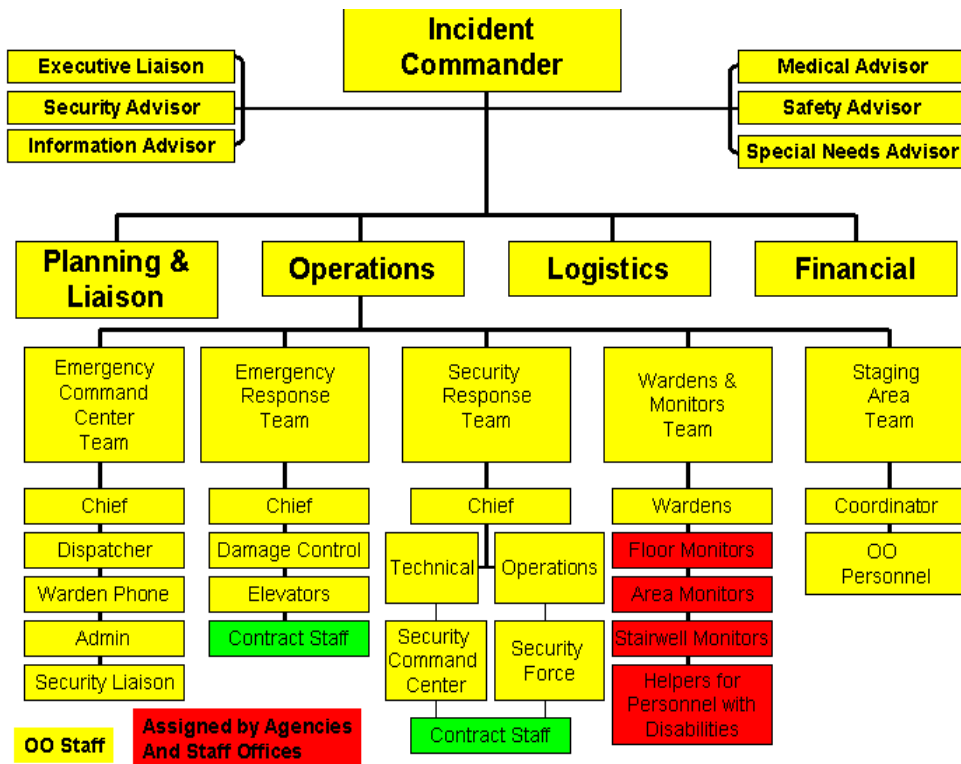
National Guard



There are official systems in place.  
Find where you fit. Learn the lingo.

## Emergency Operations Center

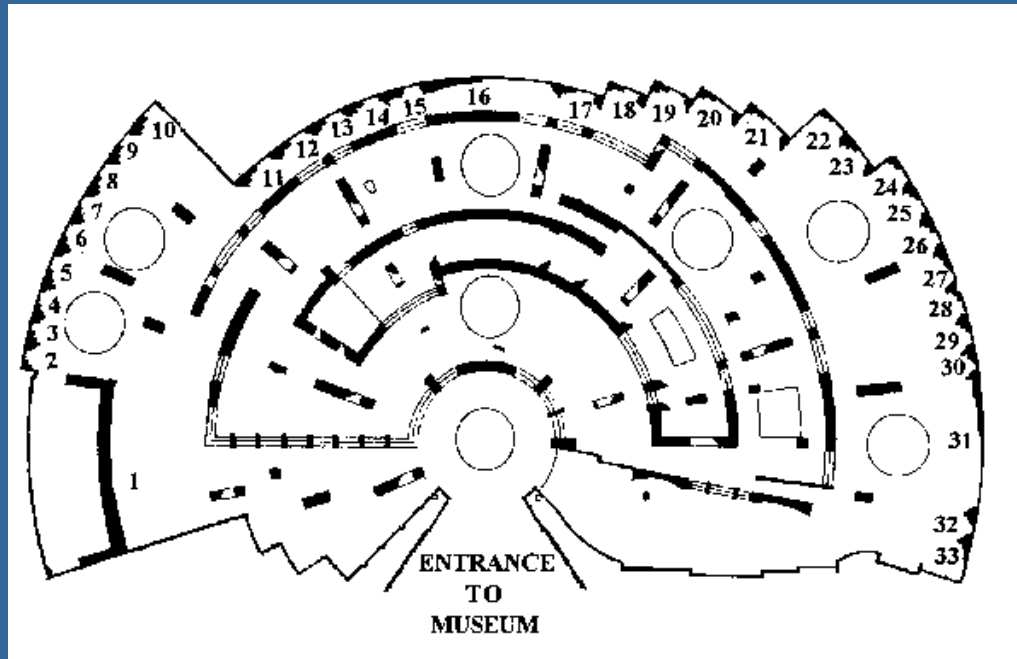
### Incident Command System



CERT...COOP...EOC...GIS...ICS...JFO...MOU...NCH...NIMS...NIPP...PNP...CEMA...



# Knowledge is power!



Hi! Do you  
keep a lot of  
toxic  
chemicals in  
your  
maintenance  
closet?



These walls  
might not  
be in the  
same place  
the next  
time I'm  
here?!







Emergency professionals can help you develop realistic plans.

**WORKING WITH**  
**EMERGENCY**  
**RESPONDERS**

**TIPS FOR CULTURAL INSTITUTIONS**  
What do they need to know before, during, and after an emergency?

In any major emergency, you will be working with local emergency responders to save and secure your institution. If you have a good relationship with your local emergency responders and know how their systems and practices work, you can help them keep your staff and collections safe.



# The Power of Partnerships

[www.heritagepreservation.org/AfR](http://www.heritagepreservation.org/AfR)



[Alliance for Response Home](#)

[About Alliance for Response](#)

[Alliance for Response Tool Kit](#)

[Alliance for Response Online Discussion](#)

[Alliance for Response News Archive](#)

[Disaster Resources](#)

[Task Force Home](#)

## Alliance for Response is:

Alliance for Response is a national program on cultural heritage and disaster management. Through a series of local Forums, it builds bridges between the cultural heritage and emergency response communities before disasters happen. The Forums lead to new partnerships, policies, and cooperative planning efforts.

[more...](#)



## Alliance for Response Tool Kit

The [Tool Kit](#) contains resources to help plan Alliance for Response Forums, work with emergency responders, identify allies in your community, and help sustain local disaster

## Explore Alliance for Response

Atlanta	Boston	California	Central Pennsylvania
Denver	Galveston	New York City	Ohio
Philadelphia	Pittsburgh	Portland	Raleigh
Savannah	Seattle	Texas	Vermont

[Calendar](#)



## News from Alliance for Response Communities

- The Galveston-Houston Area Alliance for Response Kick-Off Forum is planned for July 2011. [Click here for more information.](#)
- Save the date! The second Alliance for Response National Leadership Institute will take place on July 20, 2011 in Denver, CO. [Click here for more information.](#)



- Activities of current networks
- National Leadership Institute
- 2011 Forums
- Forum Follow-up Toolkit

Atlanta	Boston	California	Central Pennsylvania
Denver	Galveston	New York City	Ohio
Philadelphia	Pittsburgh	Portland	Raleigh
Savannah	Seattle	Texas	Vermont

# Recovery Assistance

[www.heritagepreservation.org/programs/TFcurrent](http://www.heritagepreservation.org/programs/TFcurrent)



**GUIDE TO NAVIGATING**  
**Federal Emergency Management Agency**  
**and**  
**Small Business Administration**  
**DISASTER AID**  
**FOR CULTURAL INSTITUTIONS**

**Heritage Preservation**  
*The National Institute for Conservation*

## Heritage Emergency National Task Force Information on Major Disasters

If you would like to [report damage to a cultural institution or collection, please click here.](#)

[Contact your federal and local emergency managers.](#)  
[Contact your local cultural agencies.](#)

Severe storms causing strong winds, tornadoes, and flooding have taken their toll on the Southeastern United States. Below is a list of resources from members of the Heritage Emergency National Task Force and affiliated organizations to assist with response and recovery of damaged cultural resources and properties.

If you are interested in applying for federal disaster assistance, Heritage Preservation's [Guide to Navigating Federal Emergency Management Agency and Small Business Administration Disaster Aid for Cultural Institutions](#) is an excellent primer.

For the most accurate instructions on applying for federal disaster aid, you should attend your State-sponsored Applicants' Briefing. At these meetings, prospective applicants will learn about available assistance and eligibility requirements for obtaining federal assistance under the declared event. Applicant, work, and cost eligibility will be discussed, as well as funding options, record keeping and documentation requirements,

### Archive of Disaster Information

- [Japan Earthquake and Tsunami 2011](#)
- [Haiti Earthquake 2010](#)
- [Upper Midwest Flooding 2009](#)
- [Hurricanes and Tropical Storms 2008](#)
- [Midwest Flooding 2008](#)
- [California Wildfires 2007](#)
- [Hurricanes 2005](#)

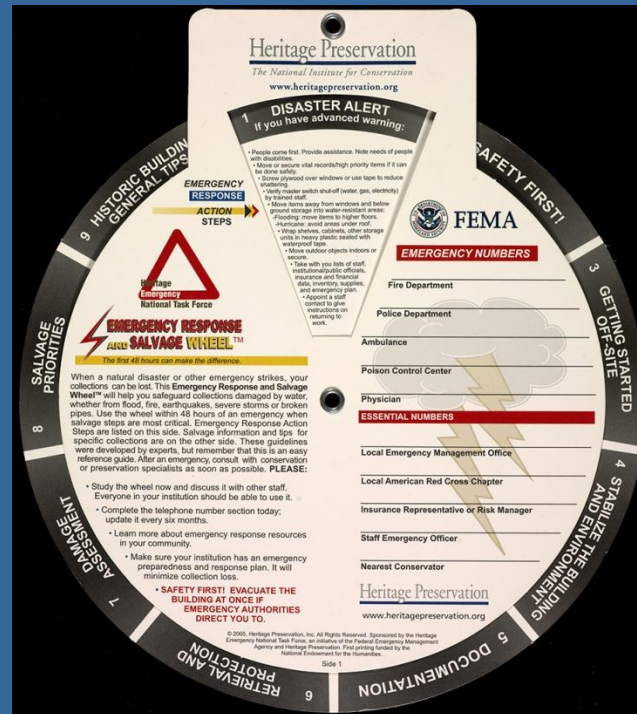
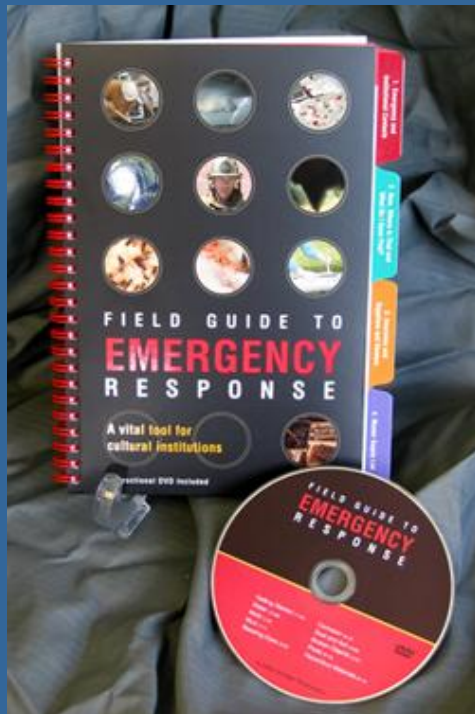


# Incentives for Preparedness



# Expert Advice Made Easy

## For cultural heritage:



## Implementing the Incident Command System at the Institutional Level

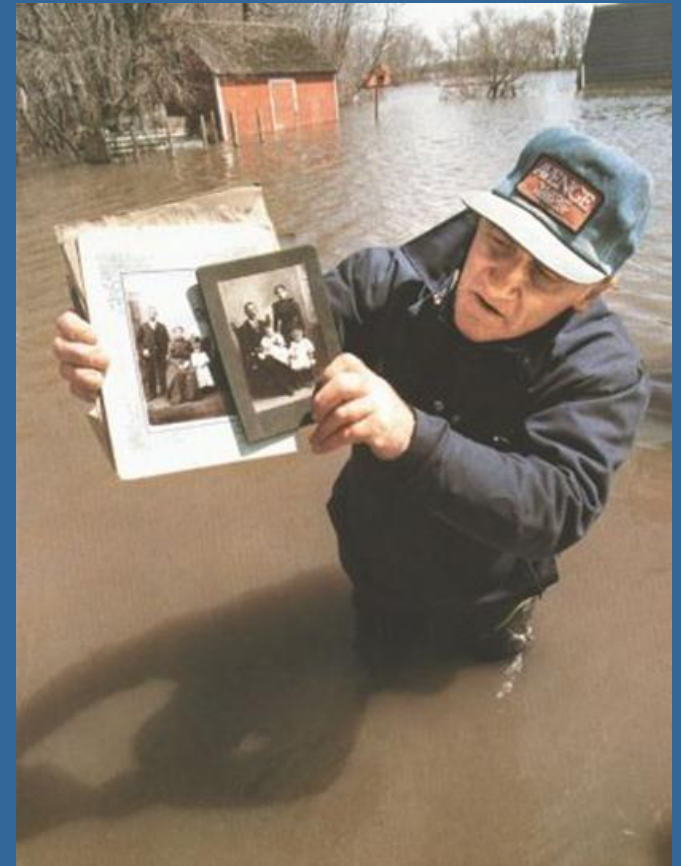
### A Handbook for Libraries, Archives, Museums, and other Cultural Institutions

David W. Carmicheal

# Expert Advice Made Easy

And for the general public:

- Save Your Treasures the Right Way
- Coping with Water Damage (video)
- Dealing with Soot (video)







**Emergencies: You just never know, do you?**



# Tropical Storm Don

4 AM CDT Fri Jul 29 2011

Position 25.3 N 93.6 W

Maximum Winds 50 mph

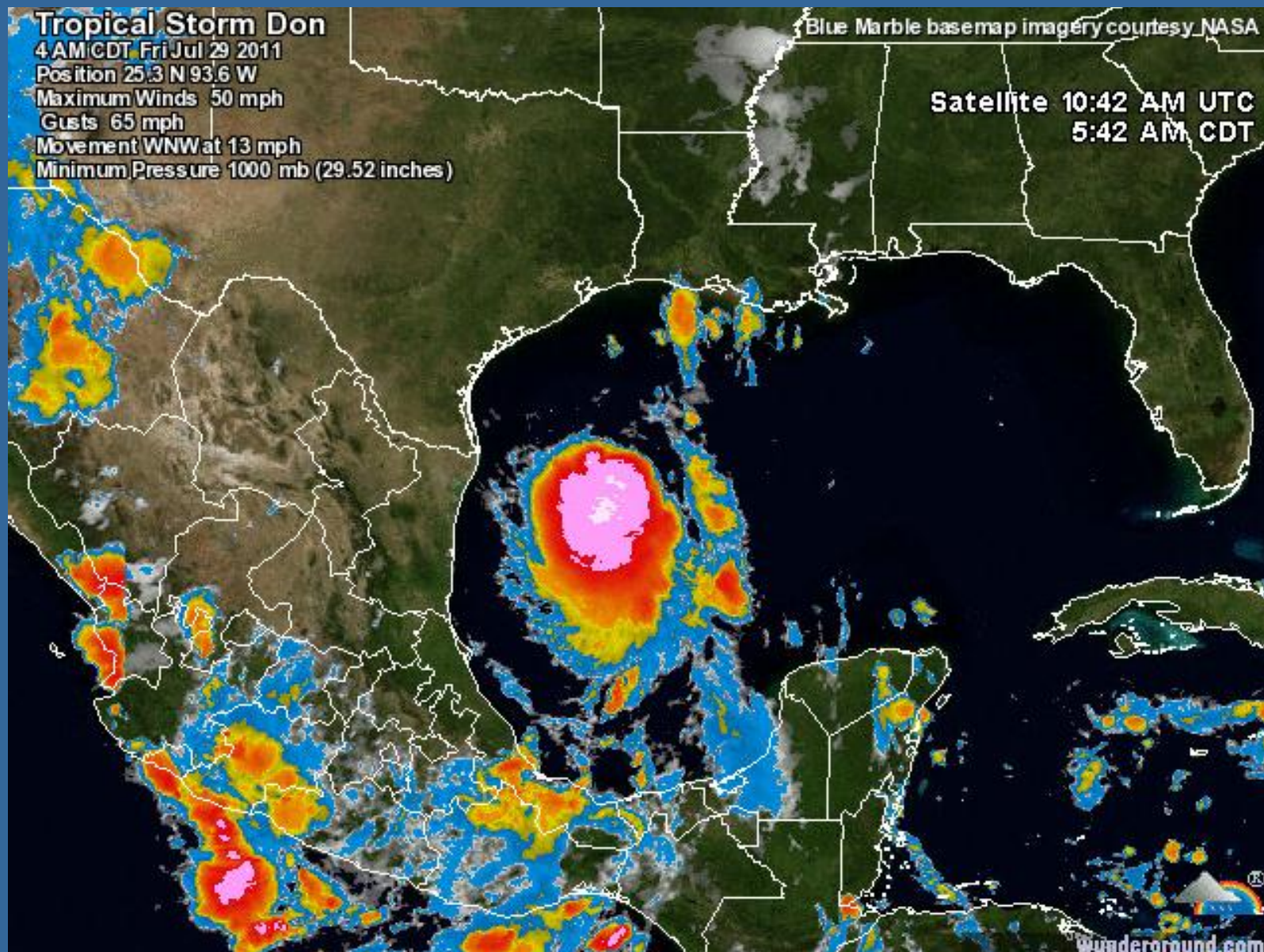
Gusts 65 mph

Movement WNW at 13 mph

Minimum Pressure 1000 mb (29.52 inches)

Blue Marble basemap imagery courtesy NASA

Satellite 10:42 AM UTC  
5:42 AM CDT



Wunderground.com