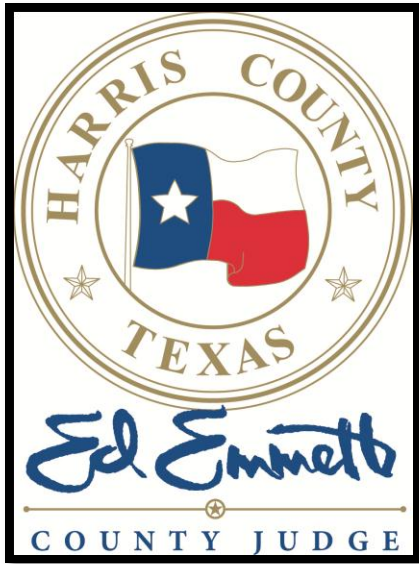


Hurricane Season 2011

Be Prepared!



Judge Ed Emmett

Director of Homeland Security and Emergency Management

HCOHSEM's Mission

- **Harris County OHSEM will help prepare, safeguard and protect the residents and property of Harris County from the effects of disasters through effective planning, preparation, response and recovery activities.**

HCOHSEM in Action

- **Develop, maintain and coordinate a comprehensive emergency management plan.**
- **Activate and staff an Emergency Operations Center (EOC) to coordinate and support efforts to respond to, and recover from, emergencies and disasters.**
- **Develop and assist in the delivery of effective public outreach programs.**
- **Collect, provide and disseminate information for elected officials, the media, our residents, partners and other stakeholders.**
- **Train, educate, and prepare for emergencies through the development and delivery of effective classes, drills and exercises.**

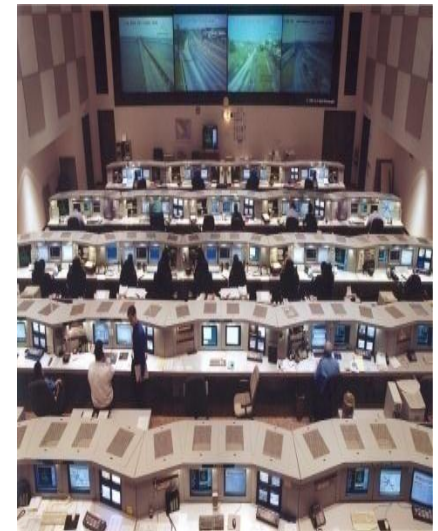
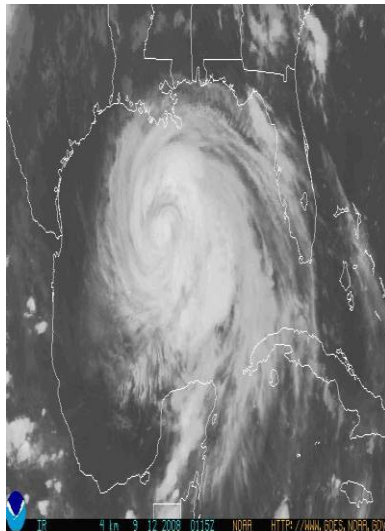
Harris County Statistics

- **1777 Square Miles (Rhode Island=1545 Sq. Mi.)**
- **± 4 Million People (Larger than 26 States)**
- **2nd Largest Port Based on Exports**
- **3rd Largest County in U.S. by Population**
- **34 Cities**
- **54 Fire Departments**
- **Over 125 Law Enforcement Agencies**
- **22 Major Watersheds**
- **Over 1200 MUD's & PUD's**
- **8800 Miles of Pipeline**

Harris County EOC



Hurricane Preparedness



What can you do to be Prepared?



Harris County

Homeland Security & Emergency Management

Director of OHSEM
Harris County Judge
Ed Emmett
Harris County's Role

[Home](#)[About OEM](#)[News](#)[Flood Data](#)[Español](#)

IKE Recovery

[Hurricane IKE Recovery Resources](#)

[Disaster Assistance Recovery Center](#)

Main Menu

[Home](#)[About OEM](#)[News](#)[Flood Data](#)

Get Informed



[National Weather Service](#)



[Ozone Levels \(TCEQ\)](#)



[Traffic Map](#)



[School Alerts](#)



[Amber Alerts](#)



[Email Alerts](#)

Get In Touch



[Phone Numbers](#)



[Links](#)

Welcome

Welcome to the Office of Homeland Security & Emergency Management (OHSEM) Web site.

Updated daily, this Web site gives you the tools to get informed, get prepared, and get involved.

An involved community is a well prepared community and your family's partnership with Harris County is the foundation of our homeland security and emergency management strategy.

Harris County Judge Ed Emmett and OHSEM hope you will visit our site often.

Latest News

[NEW: Harris County Under 90-Day Burn Ban](#)
Feb 10 2009 2:27PM

Hurricanes



Hurricanes generate a series of threats to lives and property.

The most obvious is the threat posed to buildings, equipment, and people by the high winds which characterize such storms.

Another serious threat to life and property comes from the

Current Threat Level

ELEVATED
SIGNIFICANT RISK OF
TERRORIST ATTACKS

Get Prepared



[Natural Disasters](#)



[Manmade Threats](#)



[Terrorist Threats](#)



[Evacuation Info](#)



[Make A Plan](#)



[Hazard Mitigation](#)

Get Involved



[Amateur Radio](#)



[Citizen Corps](#)

LEPC [LEPC](#)



[Give Blood](#)

Special Interest



[Business & Industry](#)



[Kids & Teachers](#)



[Pets & Animals](#)

65+ [Older Americans](#)

2011 Hurricane Season


Dr. Grays Forecast			
Year	Named Storms	Hurricanes	Intense Hurricanes
2010	15	8	4
2010 Observed	19	12	5
2011	16	9	5

Probabilities for at Least One Major (Cat 3-4-5) Hurricane


Entire U.S. coastline - 72% (average for last century is 52%)

Gulf Coast (Florida Panhandle westward to Brownsville) - 47% (average for last century is 30%)

4 Major Hurricane Hazards

A large, turbulent wave of water crashing over a street, with traffic lights visible above the water.

Storm Surge

A dark, swirling funnel cloud extending from a stormy sky to the ground.

Tornadoes

A city skyline, including a prominent skyscraper, is partially submerged in floodwater.

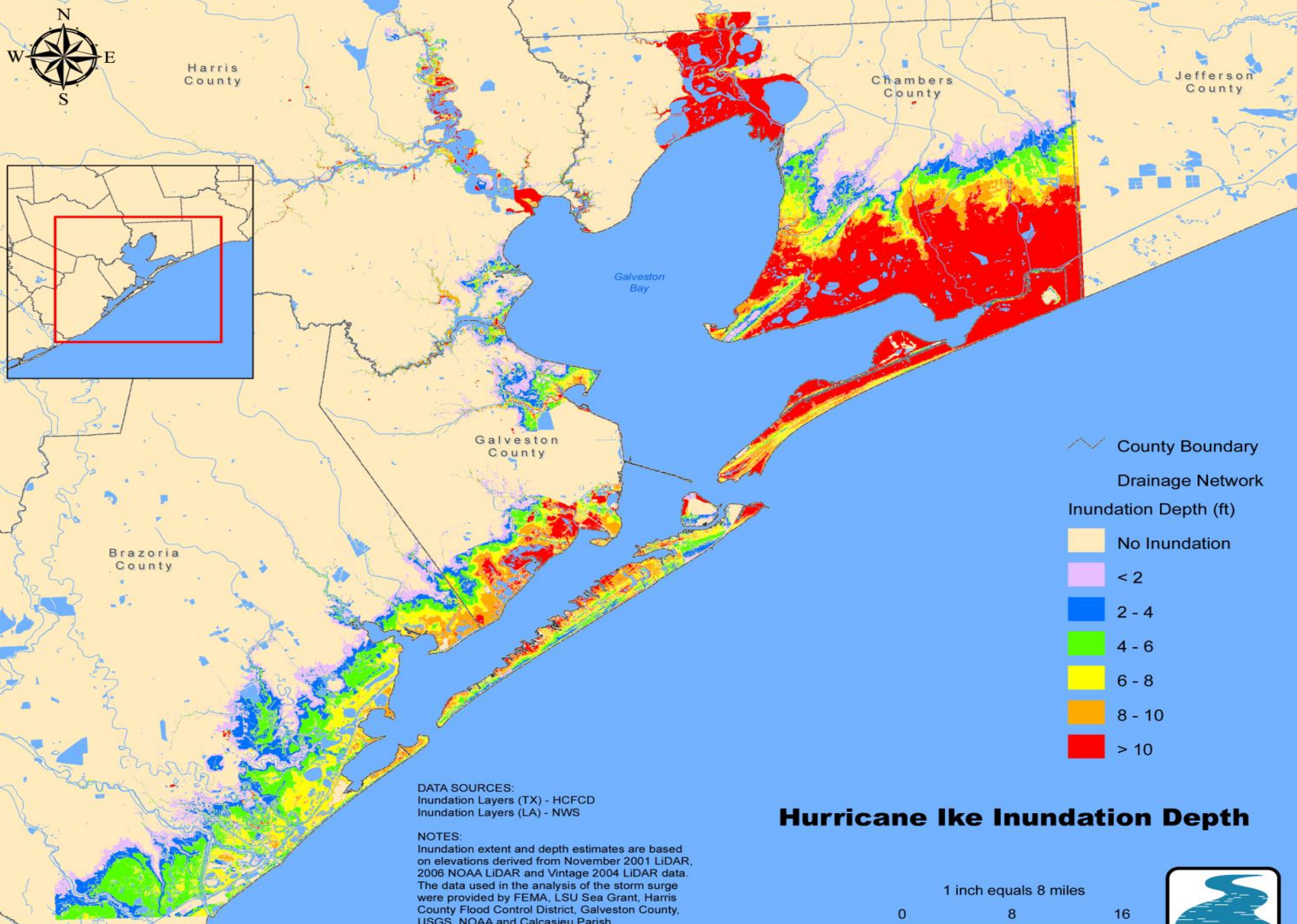
Rainfall/Flooding

A palm tree is being bent over by strong winds, with waves crashing against a building in the background.

Wind

Buffalo Bayou: Looking upstream from Main St., 6/9/01





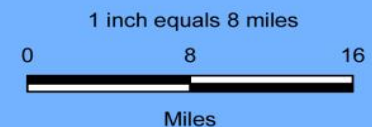
The Harris County Flood Control District makes no claim as to the accuracy or correctness of the data represented on this map. Appropriate use of this data is the sole responsibility of the user.

DATA SOURCES:
Inundation Layers (TX) - HCFCDD
Inundation Layers (LA) - NWS

NOTES:
Inundation extent and depth estimates are based on elevations derived from November 2001 LiDAR, 2006 NOAA LiDAR and Vintage 2004 LiDAR data. The data used in the analysis of the storm surge were provided by FEMA, LSU Sea Grant, Harris County Flood Control District, Galveston County, USGS, NOAA and Calcasieu Parish.

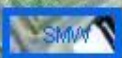
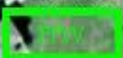
20FEB2009

Hurricane Ike Inundation Depth





Tornado Severe T'storm Flash Flood Special Marine



© 2009 Tele Atlas

Image Houston-Galveston Area Council

Google

29°26'26.55" N 94°28'09.96" W

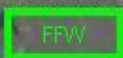
clay 2 m

Jan 15, 2006

Elev alt 520 m



Tornado Severe T'storm Flash Flood Special Marine



Sandollar

Wommack

Palmetto Dr

Emerald Dr

Holiday

Sunrise

Holiday Dr

Gulfview

Townsend Dr

W Lazy Ln

© 2009 Tele Atlas

Image Houston-Galveston Area Council

Google

29°26'36.55" N 94°39'09.96" W

elev. 2 m

Jan 15, 2006

Eye alt. 520 m

Pre - Storm



**“Preparing Yourself, Your Family, Your Home,
and Your Business -
Is Your Responsibility”**

Develop An Emergency Plan

Being prepared and knowing what to do in an emergency is the best protection for you and your family!

- **Plan Ahead** - Discuss with your family what you will do in different types of disasters .
 - Discuss whether you plan to evacuate.
 - Discuss how to get in contact with one another if you become separated.
 - Develop a family communications plan.
 - Evacuation destination plan / communications plan

Develop An Emergency Plan

- Implement Your **Plan** -
 - Check for adequate insurance coverage, including flood insurance
 - Consider purchasing a SAME NOAA weather radio.
- Review needs and working condition of emergency equipment (flashlights, battery-powered radios,) non-perishable food, water, camping stove with fuel, plywood to properly secure your home).
- Keep trees trimmed.

What should go into your hurricane preparedness kit?

If you are confined to your home or choose to evacuate as a result of severe weather or disaster, a disaster supply kit can be useful.

- ✓ Keep it readily accessible for safety, comfort and convenience. All household members should know where it is stored.
- ✓ Replace food, water, medical supplies and batteries as needed.
- ✓ Place the items you need during an evacuation in an easy-to-carry container, such as a backpack or plastic storage tub.
- ✓ Select the items your family will need from the suggestions in the Emergency Supply Kit pictured below.
- ✓ Don't use your emergency supply kit at your evacuation destination. You may need it when you return to your community if utilities and grocery stores aren't available for a couple of days. Eat where you are sheltered.

Emergency Supply Kit

- Flashlight
- Tissues
- Radio
- Pocket Knife
- Sanitary Supplies
 - Toothbrush
 - Soap
 - Shampoo
 - Sponge
 - Cleanser
 - Bleach
- Batteries
- Pencils
- Drinks/Juices
- Nuts
- Rice - Pasta
- Soups
- Canned Foods
- Water
 - (1 gal per person per day)



30-gallon trash barrel

- First-Aid Kit
- Medicines
- Rubbing Alcohol
- First-Aid Handbook
- Towels
- Blankets
- Paper Towels
- Toilet Paper
- Candles
- Matches
- Car Opener
- Peanut Butter
- Crackers
- Dried Beans
- Change of Clothing
- Foul Weather Gear
- Stems, Stove, Fuel
- Garbage Bags
- Cooking Utensils
 - Cooking Pot
 - Plastic Dishes
 - Silverware
 - Aluminum Foil

Emergency Supply Kit

- Medicines with prescription information
- Insurance Papers - house, car, boat, etc.
- House deeds or mortgage
- Household Inventory with pictures and prices
- Addresses and phone book
- Cash, ATM, bank, credit
- Blankets and pillows
- Hygiene supplies
- Portable radio/TV
- Entertainment
- Clothing
- Food and water
- Flashlights
- First Aid kit
- Bug spray

Preparing Your Family

- Have a Plan
- Have a Destination
- Pack Ahead
- Be Patient
- Don't forget about your pets
- Be Prepared for the Worst

Preparing Your Home

- Start buying protection supplies early in the season
- Do your research on how to protect your home
- Decide what to protect and for what purpose (wind, water, etc.)
 - Garage doors
 - Sliding Glass Doors or French Doors
- Your neighbors – Do they need your assistance
- A landline phone (not cordless) will work without power

Evacuation



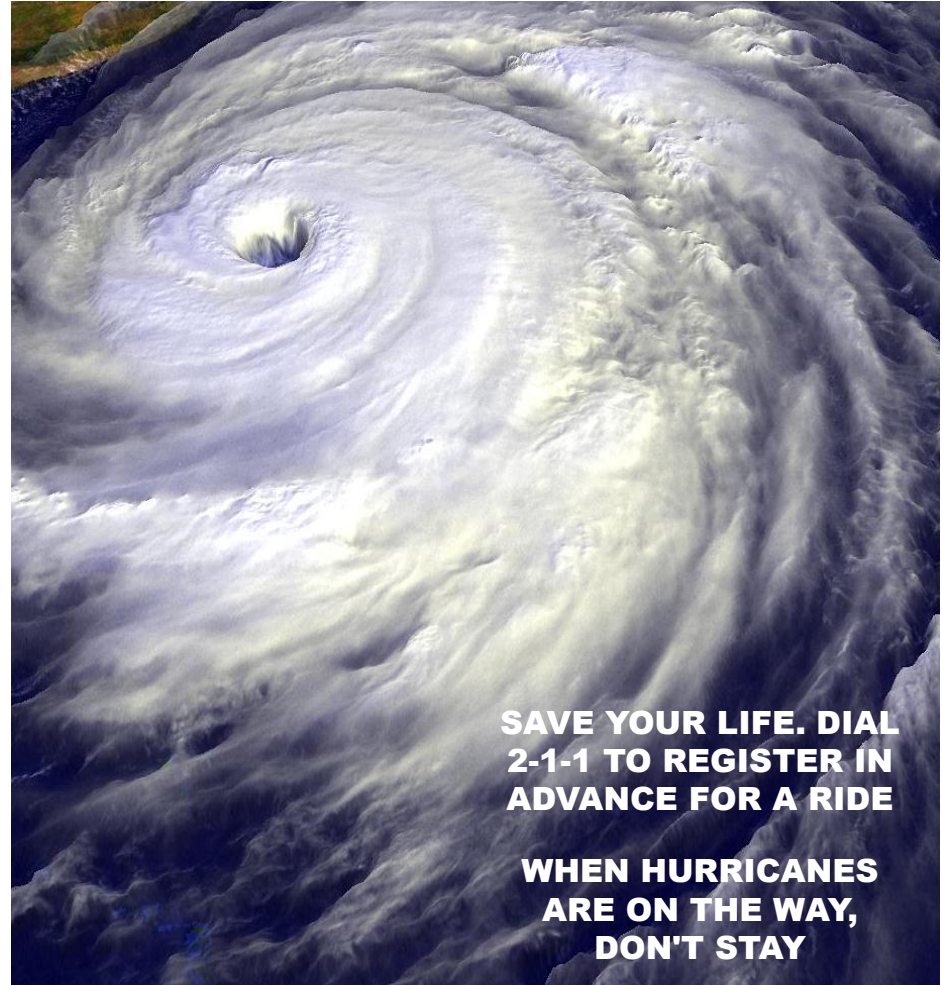
“Run From The Water, Hide From The Wind”

Ike Evacuation

- Because of a persistent educational campaign, people who lived outside the surge zones largely stayed home. As a result, roads were less clogged for coastal residents. Public-private partnership ensured the availability of fuel along the way.
 - Run from the water, hide from the wind
 - Consistent message
 - Realistic plans

RESERVE YOUR *RIDE TO SAFETY* IN ADVANCE – DIAL 2-1-1

If you live in a hurricane evacuation zone and you will need assistance to get out before the storm, dial 2-1-1 to register in advance for a ride.



Post - Storm

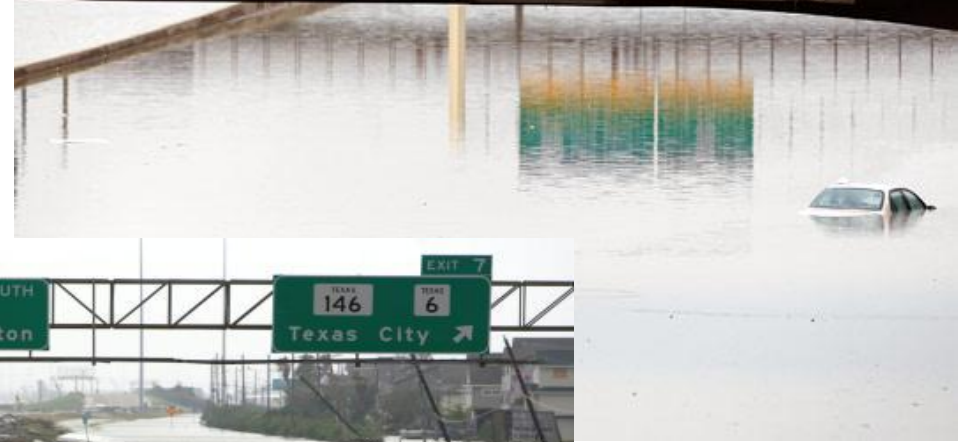


“The Aftermath”

SAR



Access Challenges





Hurricane Ike – Galveston, September 2008

What About Business?

- Employees
- Do you have a COOP for your operation
- Evacuation
- Shut-down / Start-up
- How do you contact your employees?
- Very tough decisions
- You must have a plan!!!!!!!!!!

QUESTIONS?

Harris County Homeland Security & Emergency
Management
713-881-3100

For More Information, Please Visit our Website:
www.hcoem.org