

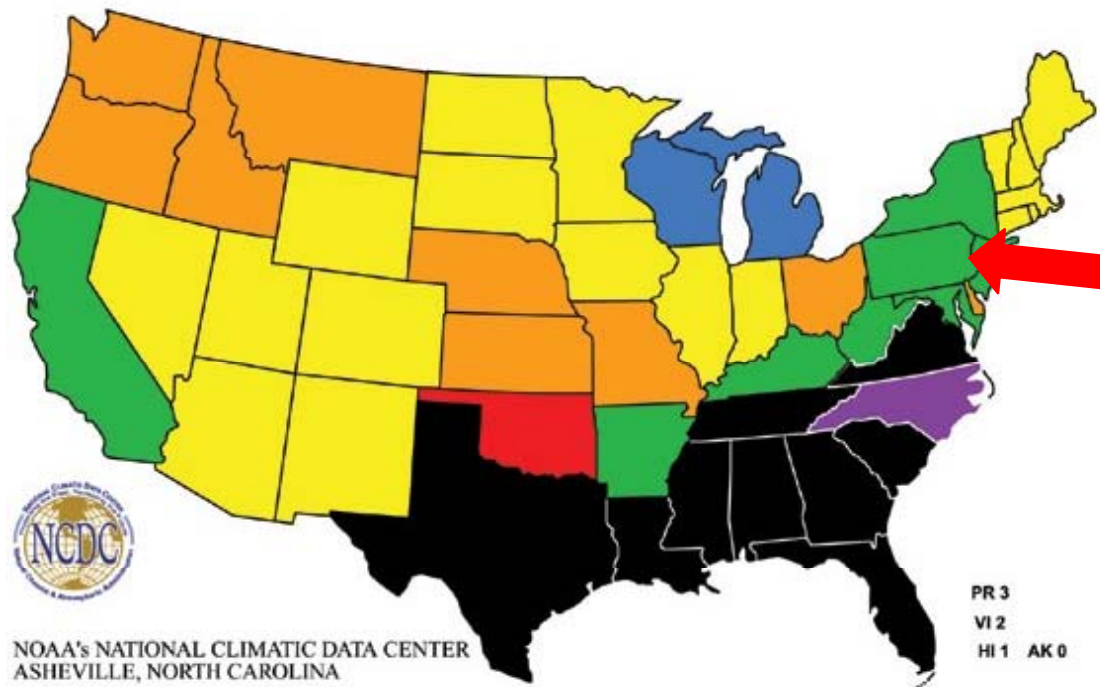
# Local, State, and Regional Disaster Threats

Amy Ward  
Gettysburg College

Alliance for Response – Central Pennsylvania  
October 26, 2009










# Billion Dollar Climate and Weather Disasters 1980 - 2004



NOAA's NATIONAL CLIMATIC DATA CENTER  
ASHEVILLE, NORTH CAROLINA

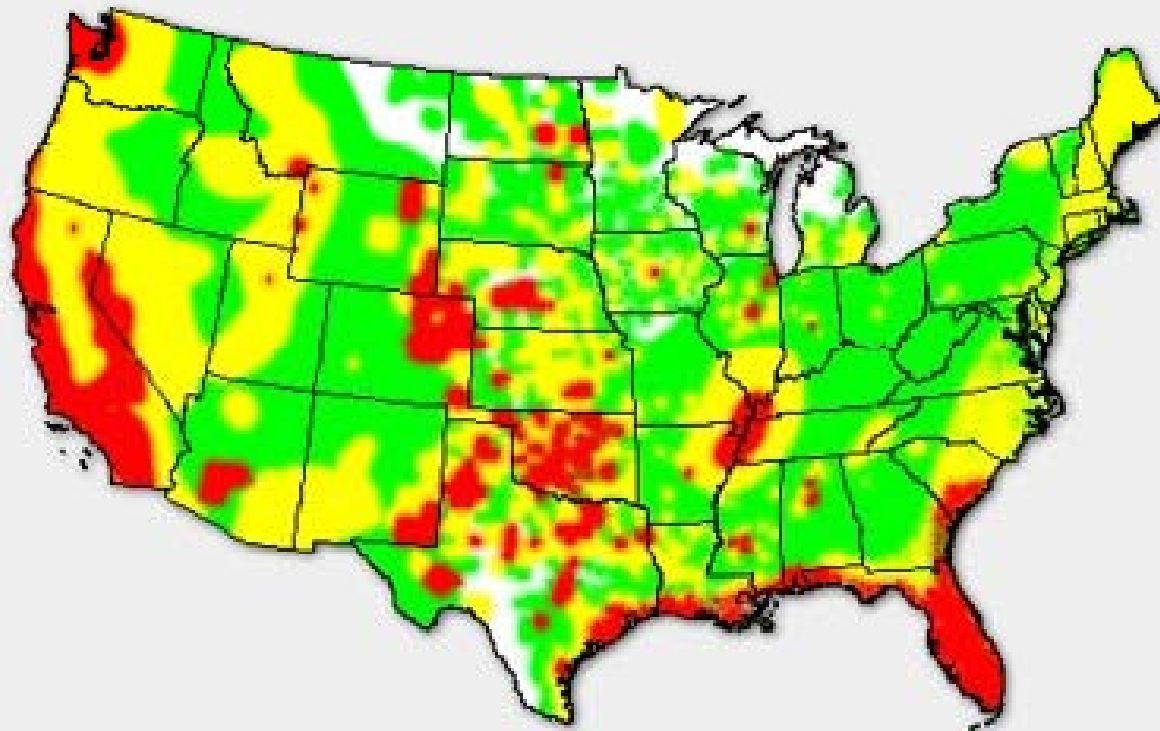
PR 3  
VI 2  
HI 1 AK 0

NUMBER OF EVENTS		DISASTER TYPE	NUMBER OF EVENTS	PERCENT FREQUENCY	NORMALIZED DAMAGES (Billions of Dollars)	PERCENT DAMAGE
	1 - 3	Tropical Storms/Hurricanes	20	32.3%	144	36.8%
	4 - 6	Non-Tropical Floods	12	19.4%	55	14.1%
	7 - 9	Heatwaves/Droughts	10	16.2%	144	36.8%
	10 - 12	Severe Weather	7	11.3%	13	3.3%
	13 - 15	Fires	6	9.6%	13	3.3%
	16 - 20	Freezes	2	3.2%	6	1.6%
	21 - 25	Blizzards	2	3.2%	9	2.3%
		Ice Storms	2	3.2%	5	1.3%
		Noreaster	1	1.6%	2	0.5%
			62		391	

Please note that the national map color-coded by state reflects a summation of billion dollar events, for each state affected--ie, it does not mean that each state shown suffered at least \$1 billion in losses for each event.

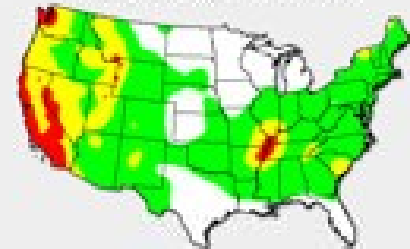
# There is still a risk.

Heatmap of earthquake, tornado and hurricane hazard areas

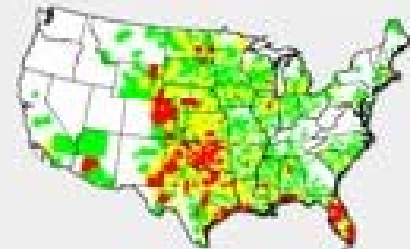


■ High ■ Medium ■ Low ■ None

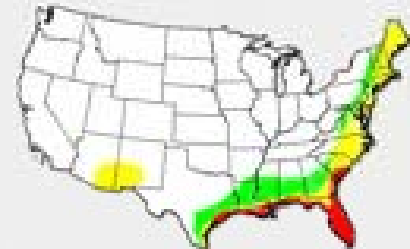
Earthquake heatmap



Tornado heatmap



Hurricane heatmap



# Some things to ask yourself:

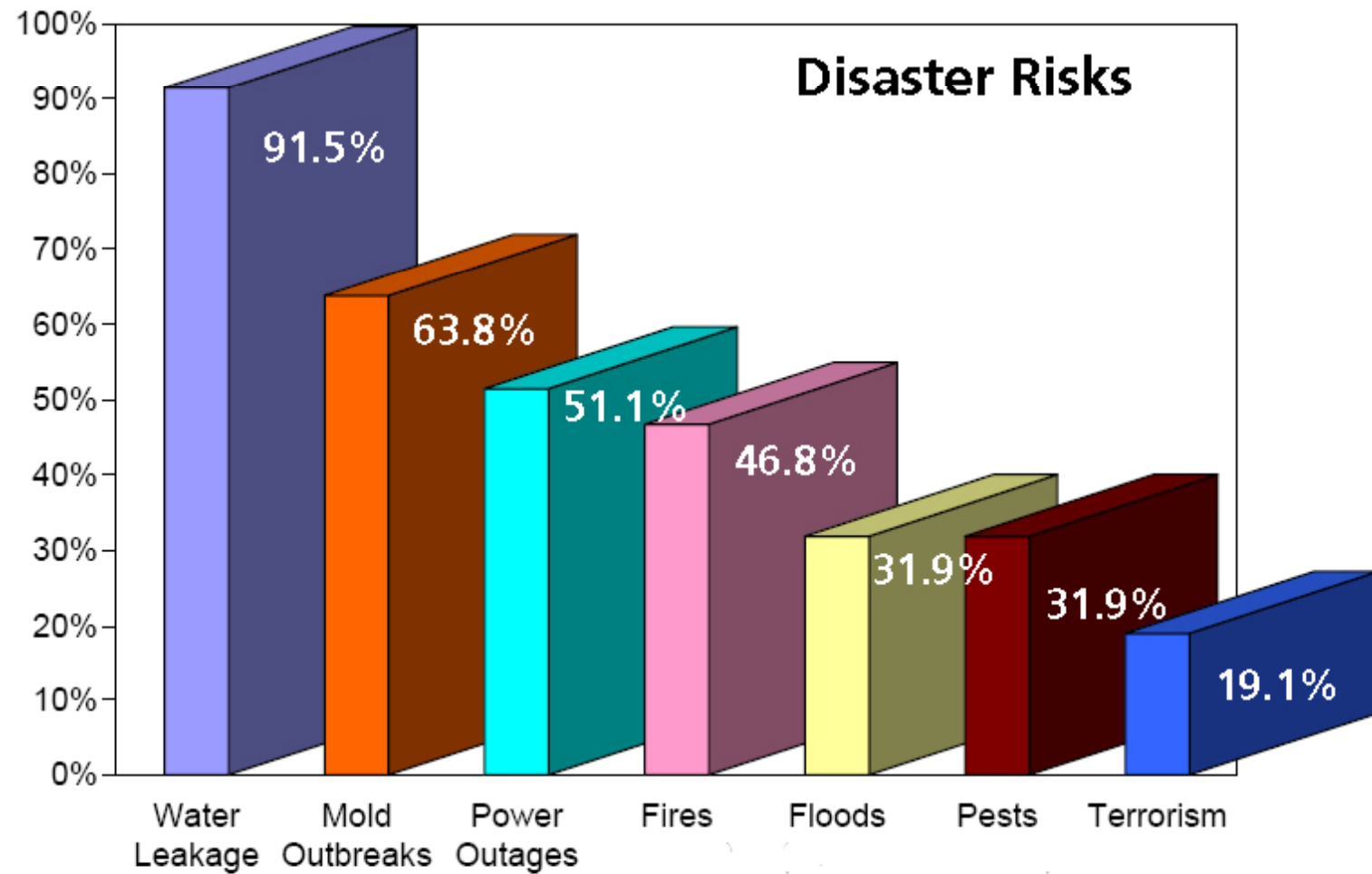
---

What threats are most common in your area?

What threats are the most common to your institution?

What have been the most common results?

# PALCI Disaster Planning Survey Report



# Water

---

Hurricanes

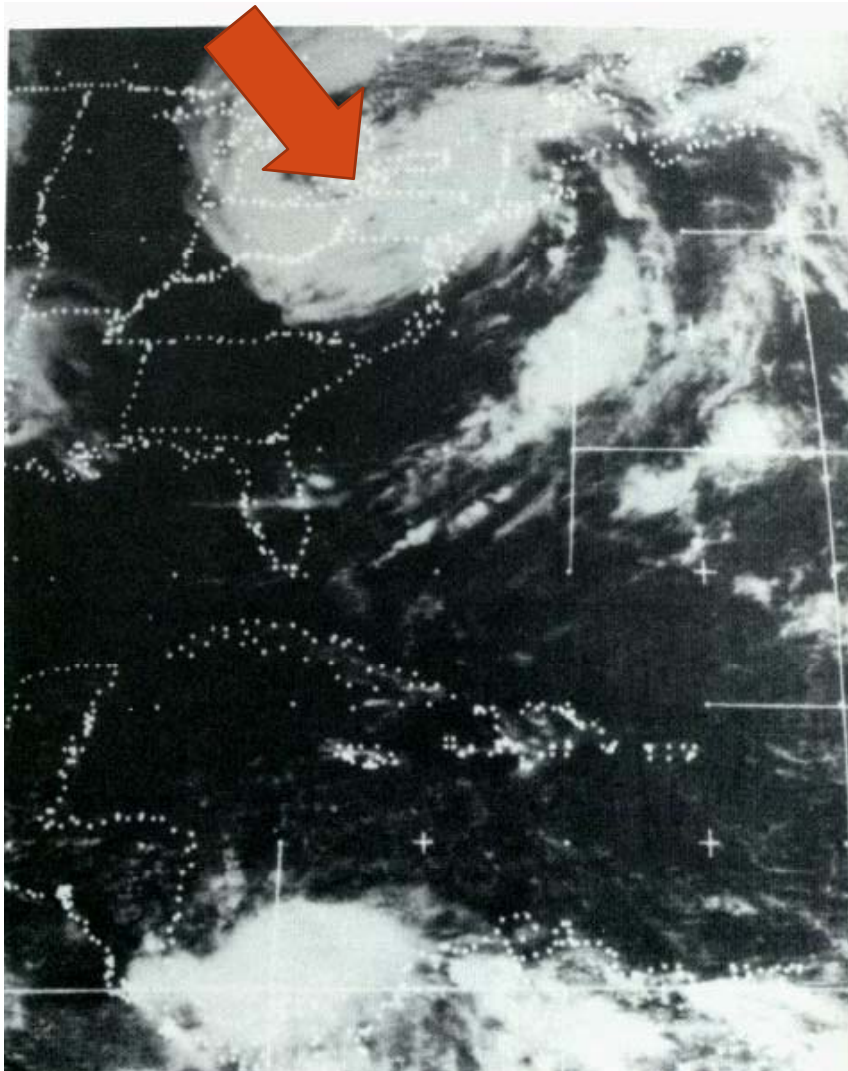
Severe Storms

Ice and/or Snow Storms

# Hurricane Agnes

---





**YORK'S GREATEST STORM**  
June 21-23, 1972







York's Finest on Call





Damaged books at Hoyt Library, Kingston, thrown away.

# Severe Storms = Flooding

---

## Biggest river east of the Mississippi





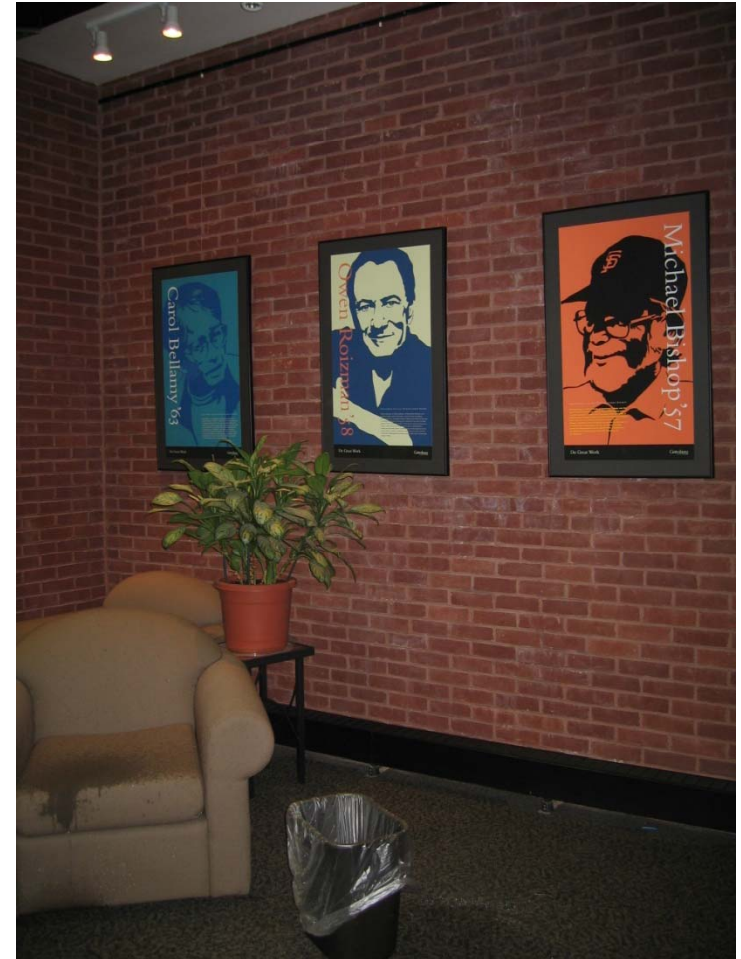


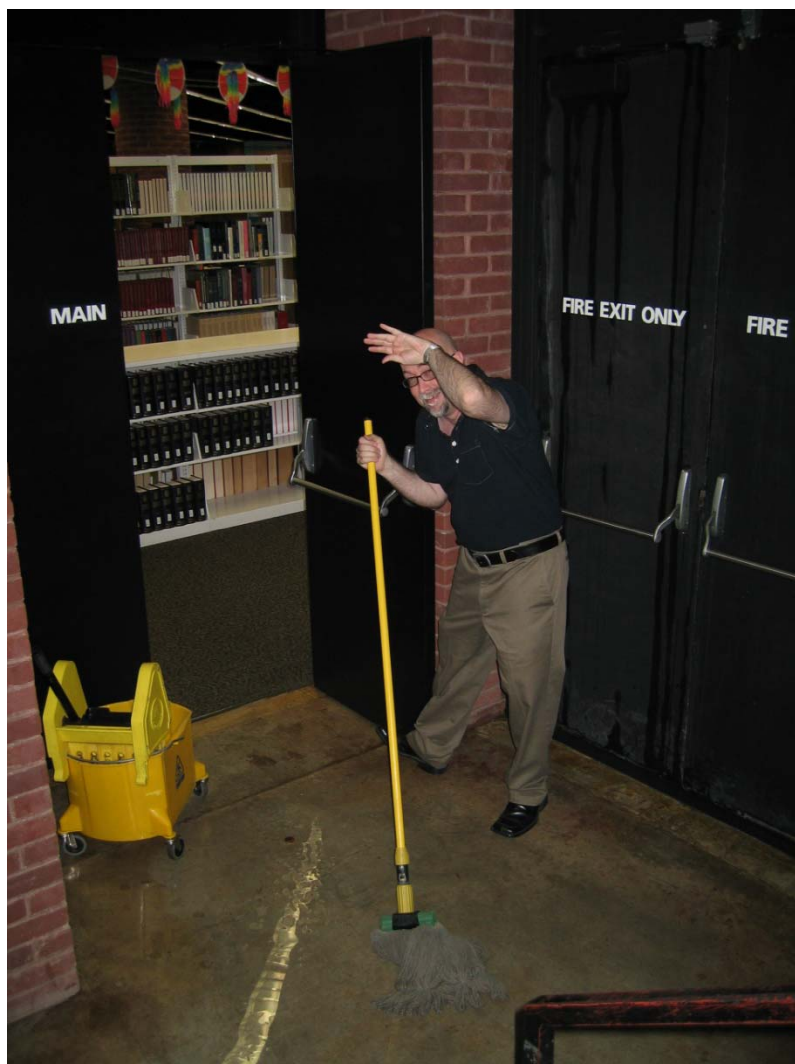








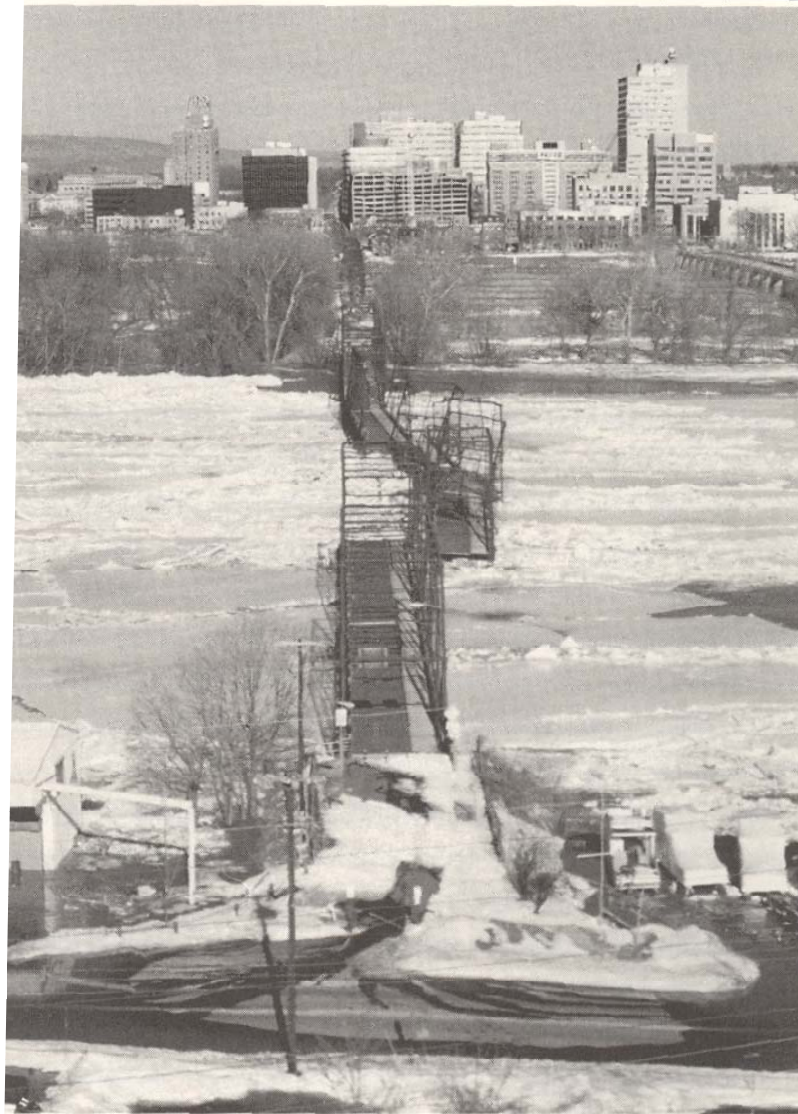





Ice

---





 Floodwater and ice dislodge sections of the Walnut Street Bridge on January 20, 1996. This photo, taken from the West Shore, shows City Island covered by water and ice, with Harrisburg's skyline in the background. (Historical Society of Dauphin County—The John Harris/Simon Cameron Mansion Museum, Harrisburg, Pennsylvania.)



# Mold

---

## Mold found in Special Collections





# Mold Remediation



# Fire

---



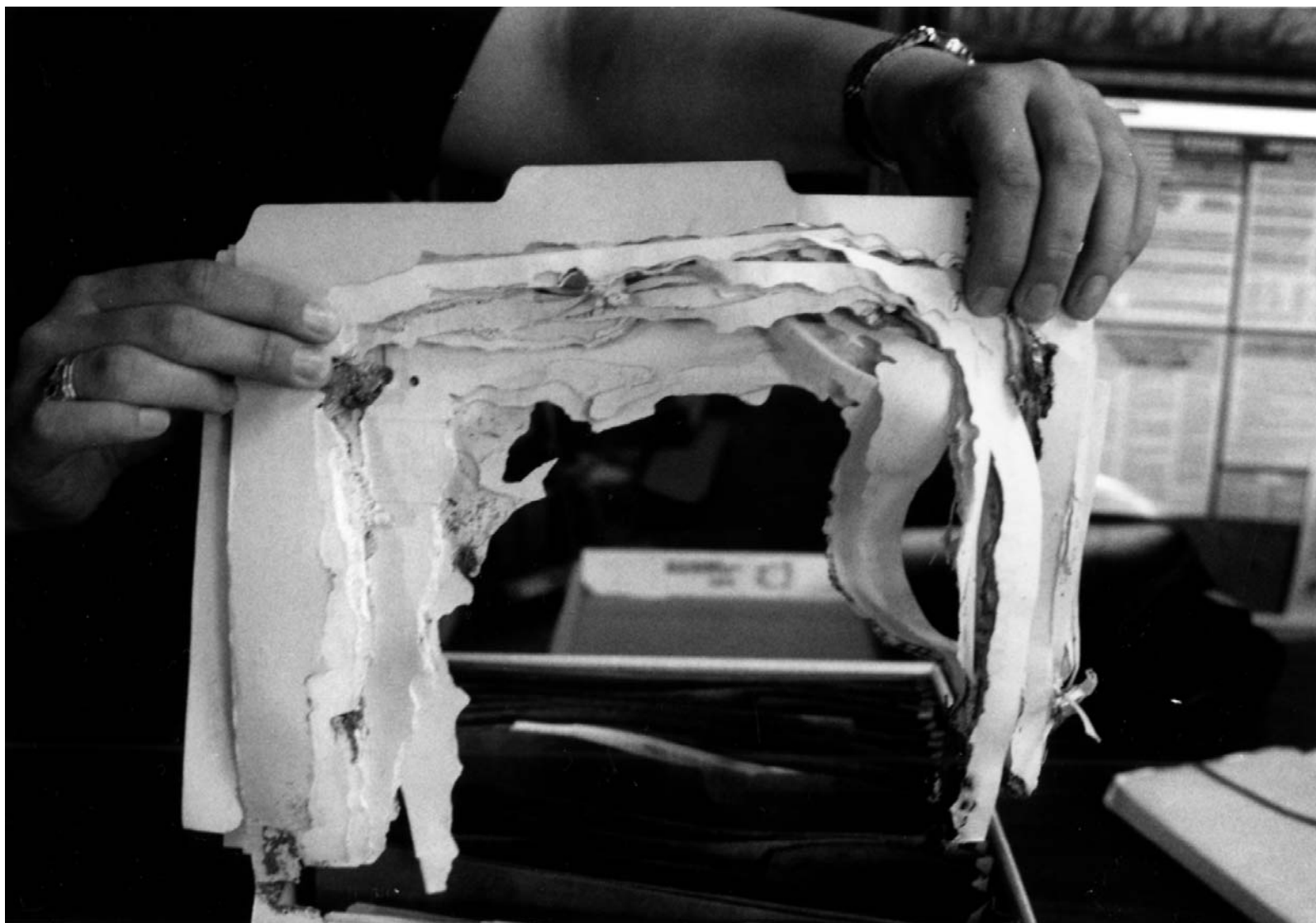
You never know what might happen.

---

# Termites...



...can be nasty.





Yes, that is a car...





...being towed from the library's entrance.



Before



After



Thank you.