

# Risks to Cultural Property: Assessment, Mitigation and Effects

NY Capital Region

Alliance for Response Forum

Saratoga, NY MJ Davis

# Risk Assessment for Institutions

- Exterior – natural disasters
- Exterior – man-made
- Internal – inside building



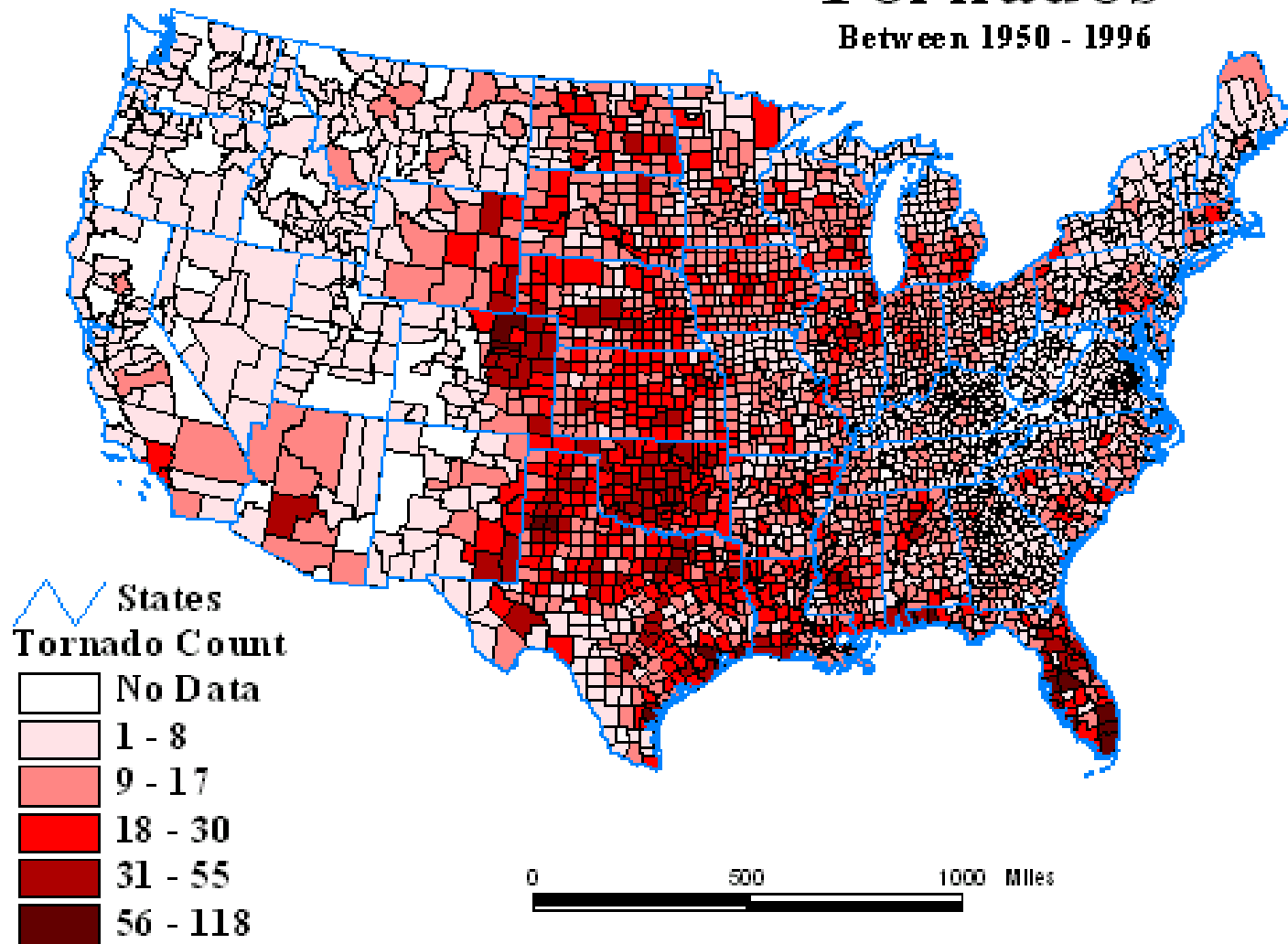


Photo courtesy of the  
Home News

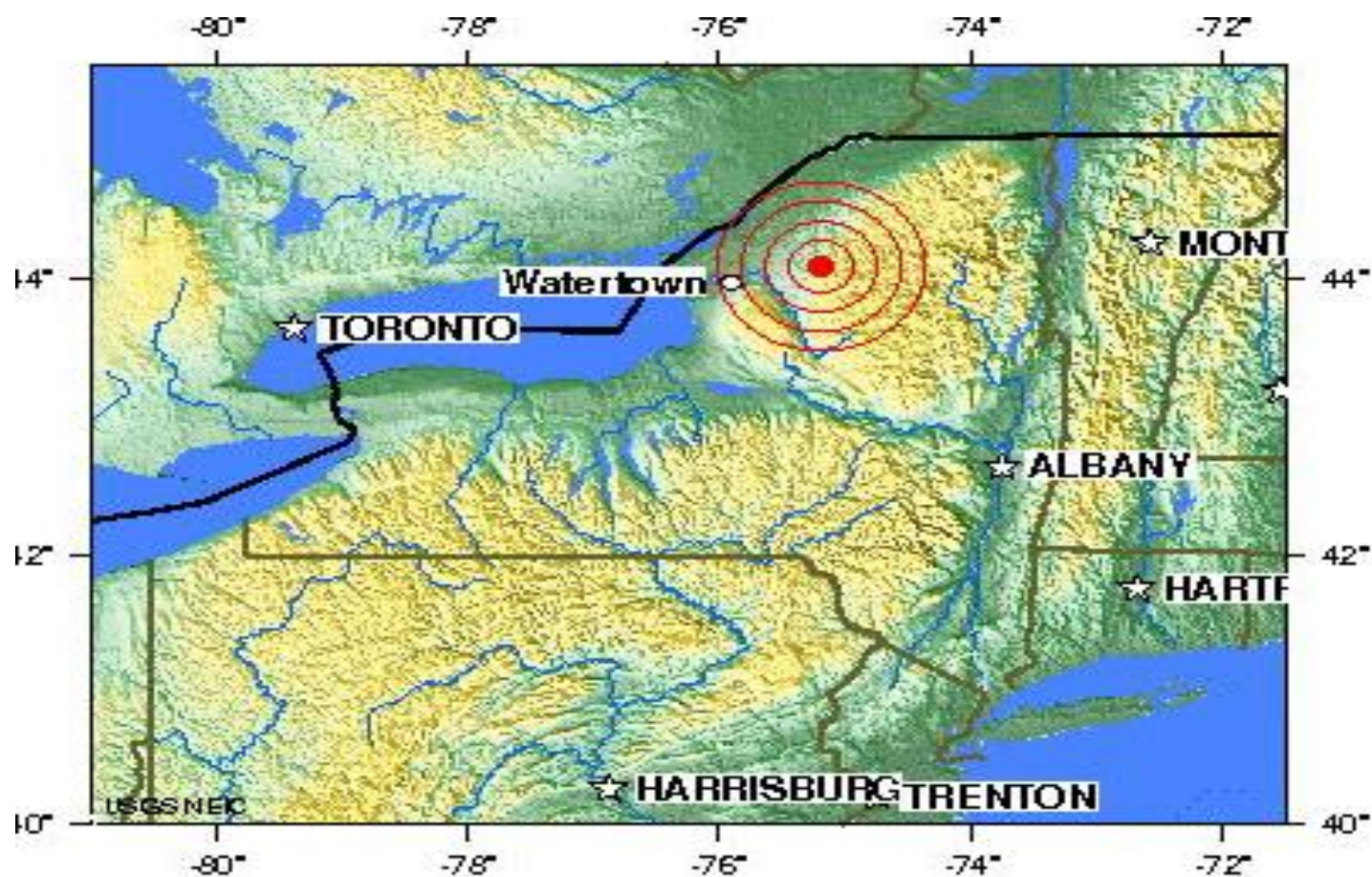


# Tornados

Between 1950 - 1996







## NEW YORK

2009 10 10 21:49:52 UTC 44.09N 75.19W Depth: 8.0 km, Magnitude: 2.4

### Earthquake Location

Major Tectonic Boundaries: Subduction Zones -purple, Ridges -red and Transform Faults -green

USGS National Earthquake Information Center

# Man-made Disasters











# Old Stone House, Brownington, VT



# Brownington, VT







# Museum in Essex, NY









# Exterior Issues





# Exterior Issues



# Interior Issues



# Interior Issues



# Mitigation Strategies for Institutions

- Natural disasters – usually warning time
- Man-made – very little advance warning
- Institutional commitment



# Mitigation from Katrina



# Mitigation strategies for moisture







# Mitigation of water issues





# Fire Mitigation



# Fire Mitigation

- Security – alarms and procedures in place
- Handle and store hazardous materials correctly
- Avoid hazardous equipment and wiring
- Be alert during renovations!
- Fire suppression systems
- Staff awareness and training

# Earthquake Mitigation

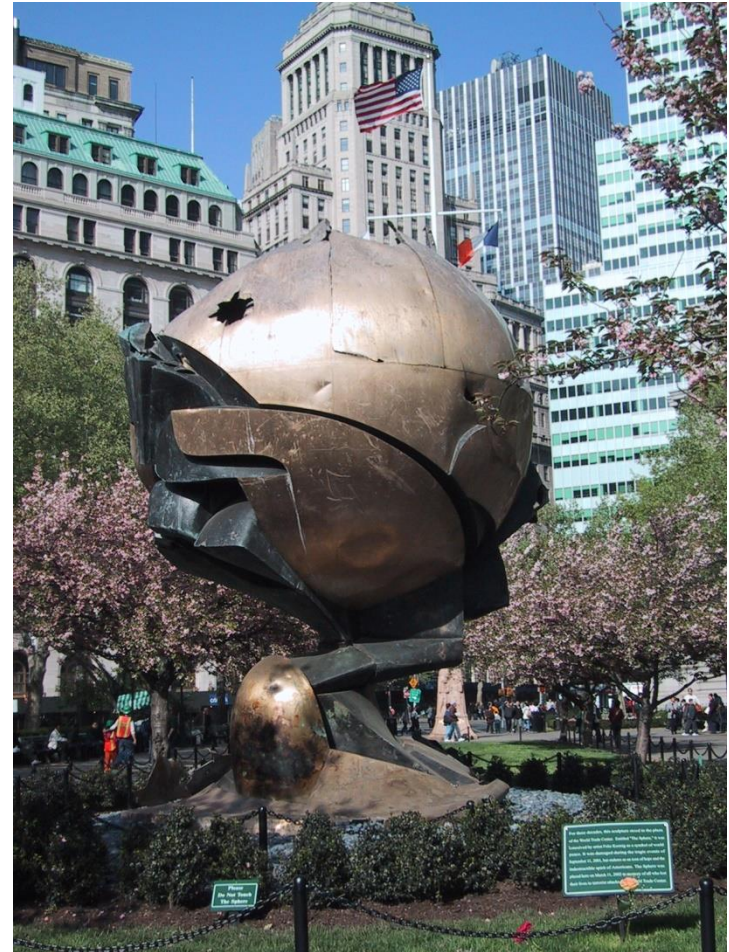


# Public Library, Washington DC





# The Twin Towers





# A Sense of Place



# Ferrisburg, VT Town Hall





# War and Civil Unrest



# Beauvoir – 3 days later



Beauvoir House 3 days after Hurricane Katrina





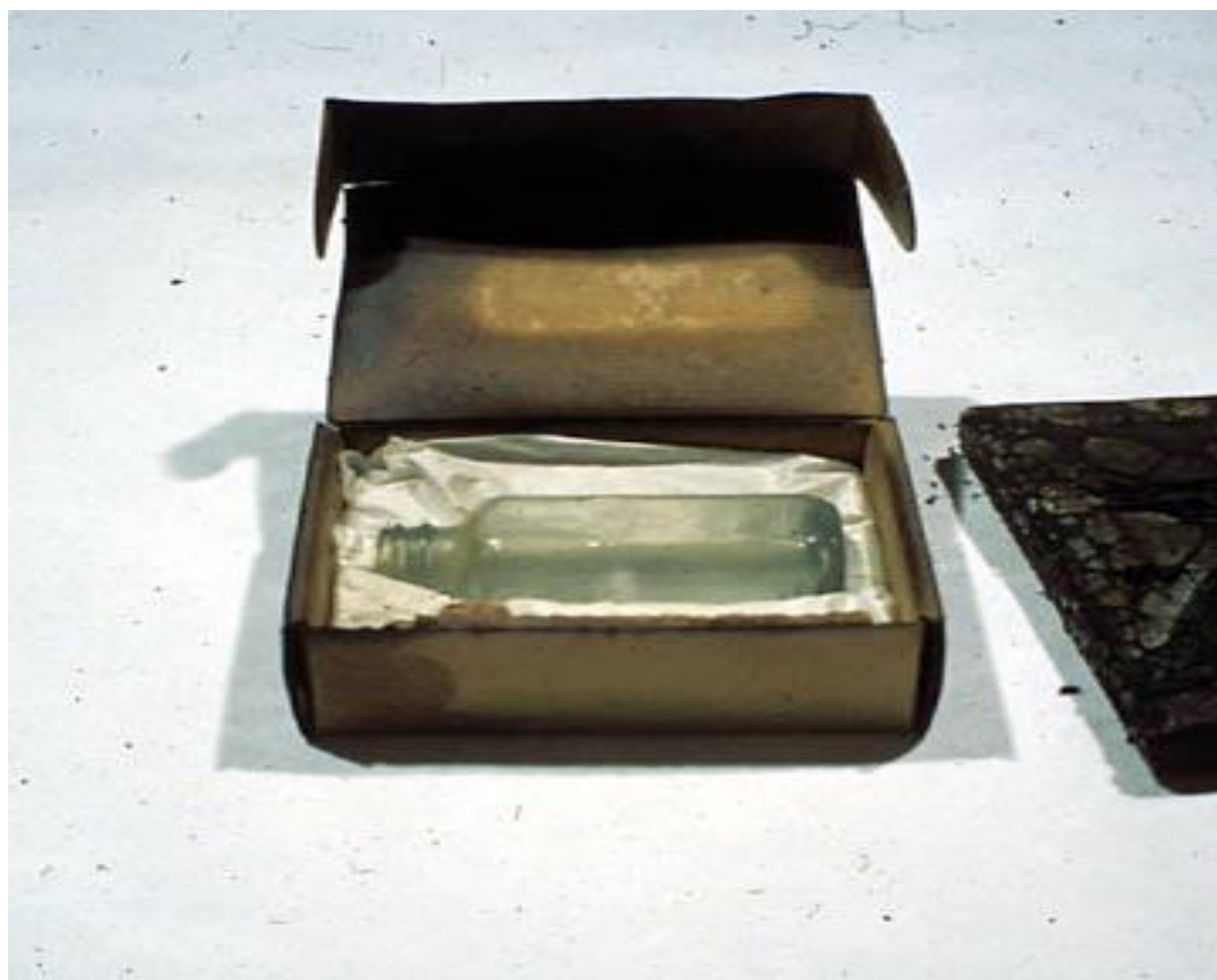




# University of Vermont











# Vermont Alliance for Response 2009





# Team Training





# Tropical Storm Irene



Tropical Storm Irene over New England

# Tropical Storm Irene





