

# Local, State, and Regional Disaster Threats



Miriam Meislik,  
University of Pittsburgh

# Things To Remember About Disasters

- There is no good time to have one
- You probably won't be near collections when they happen
- They never fail to occur at nights and weekends

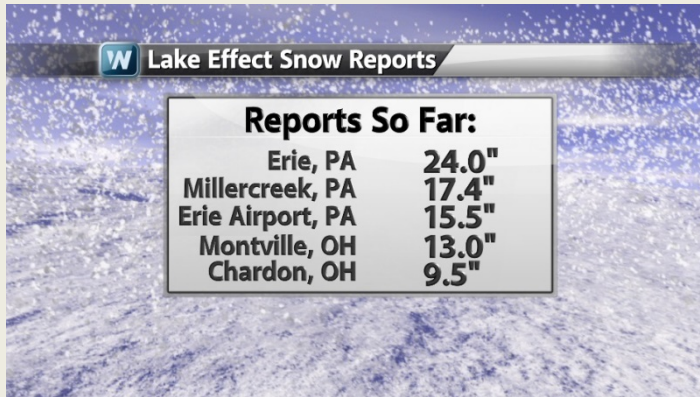


# The Impact of Weather





# Erie Loves Snow!



Wednesday, January 23rd, 2013 Snowstorm

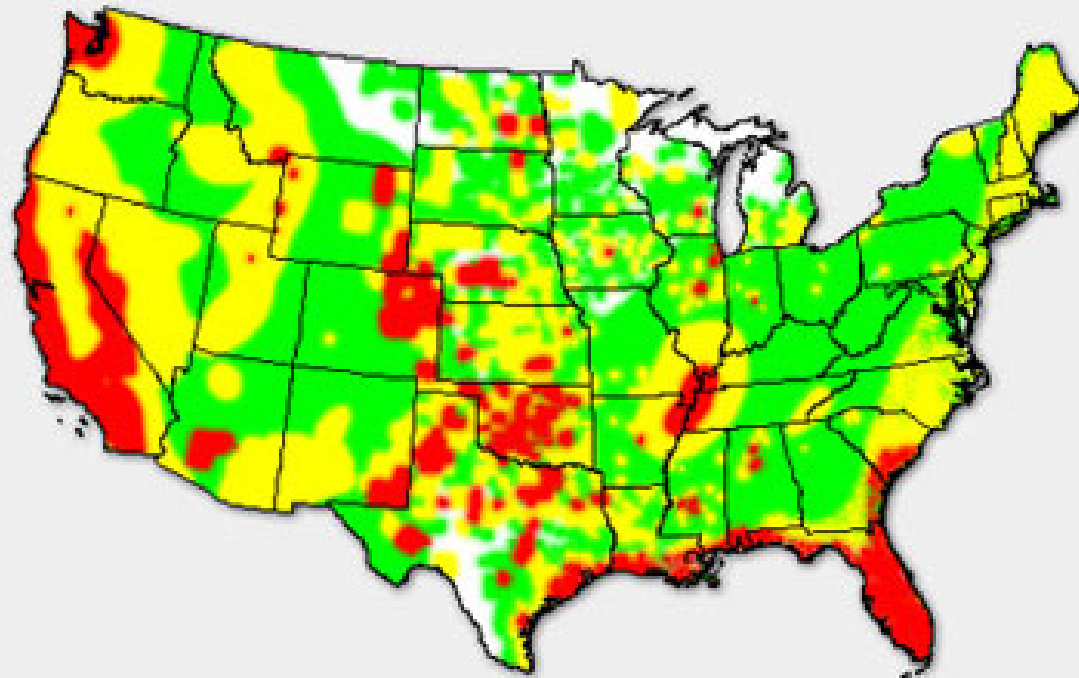


State Street Snowstorm Thanksgiving 1956



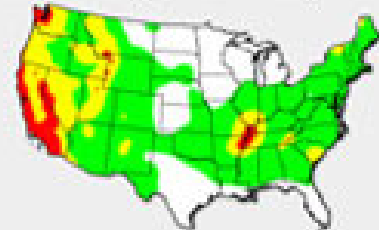
Thanksgiving 1956 Snowstorm on State Street in Erie, Pa. Photo courtesy of Sandra K. Sagala ©SKS 2012.

## Heatmap of earthquake, tornado and hurricane hazard areas

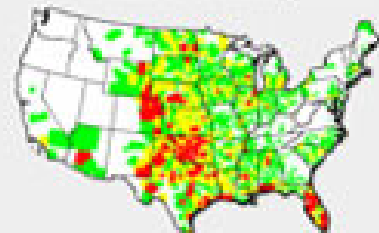


■ High ■ Medium ■ Low ■ None

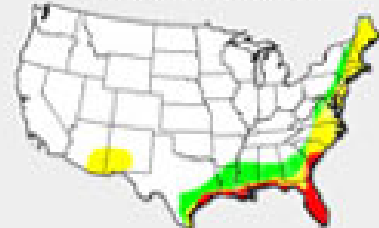
Earthquake heatmap



Tornado heatmap

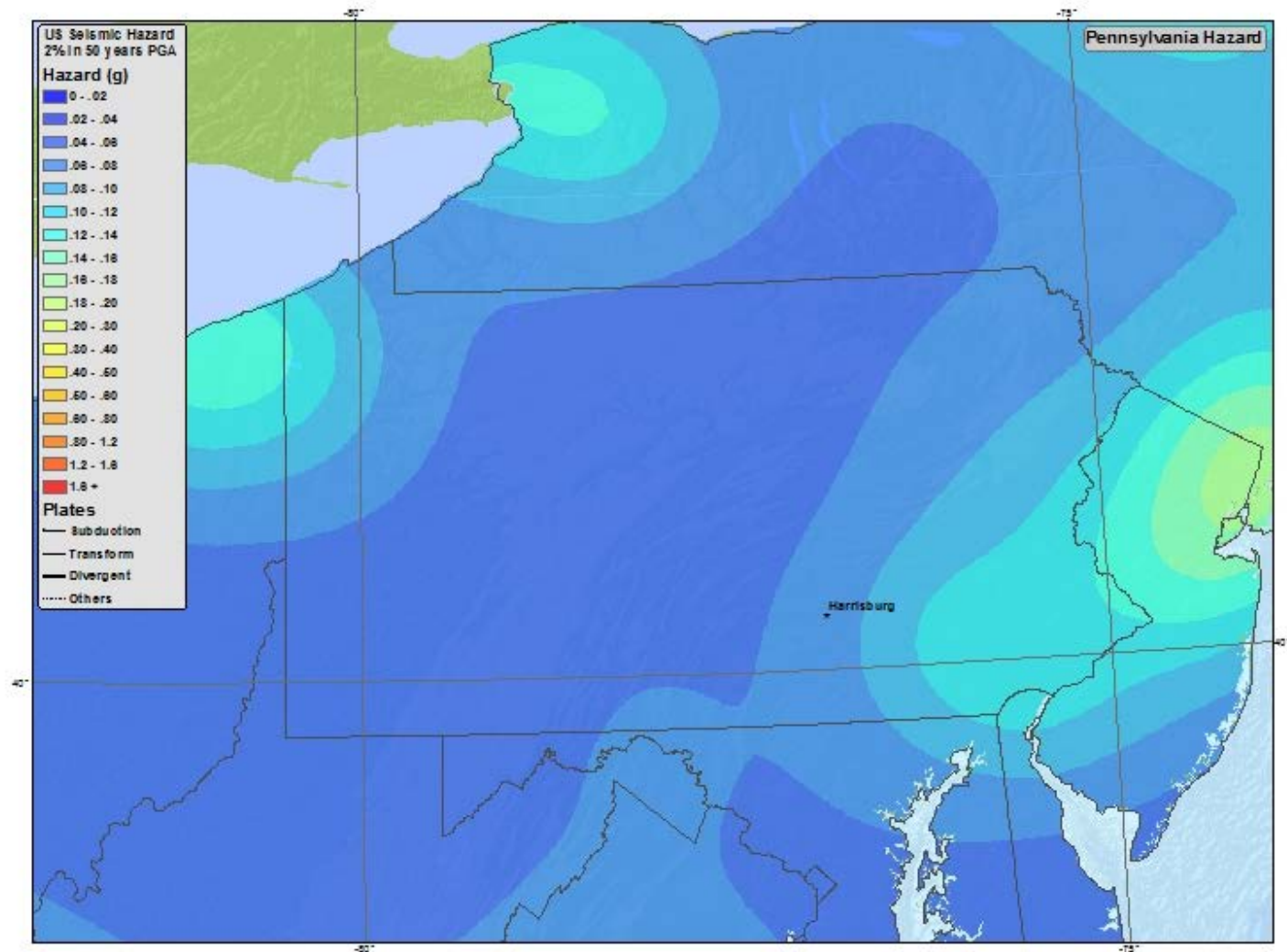


Hurricane heatmap



# Pennsylvania

## Seismic Hazard Map

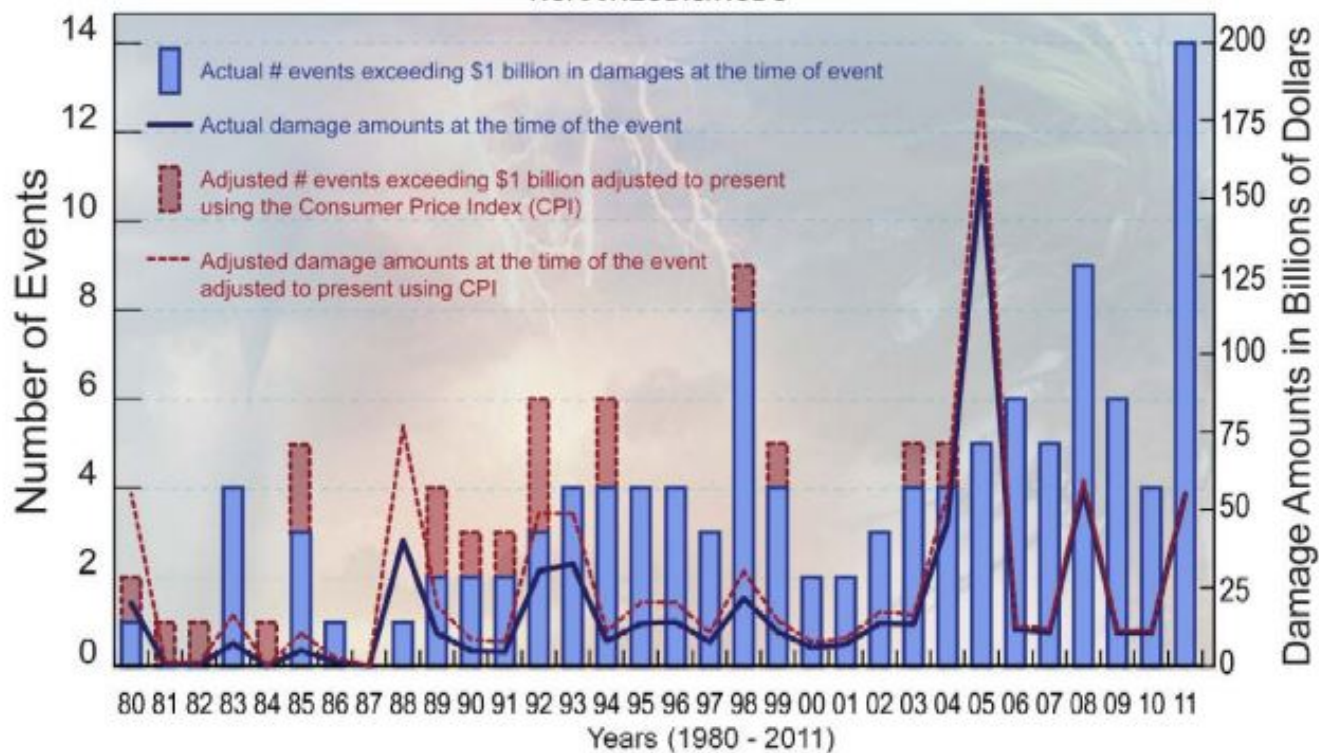




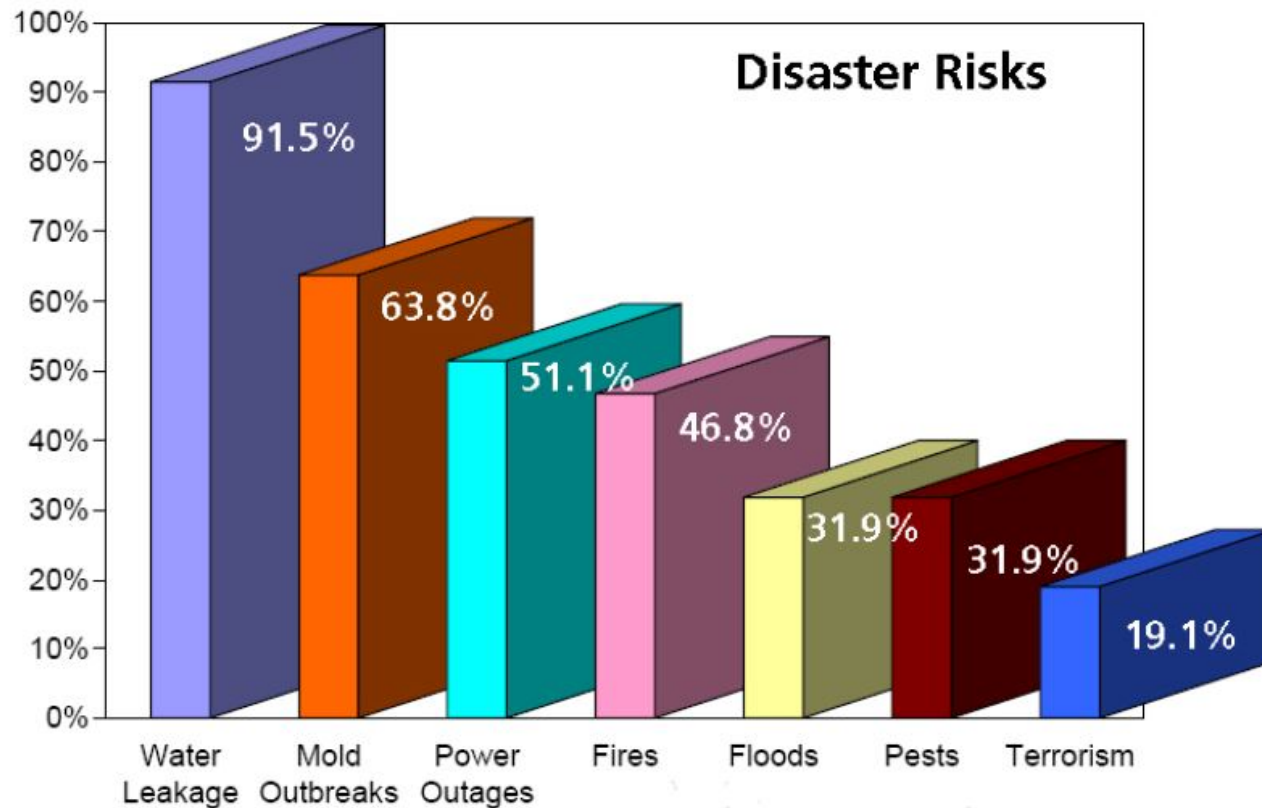
## Billion Dollar Weather/Climate Disasters

1980 - 2011

NOAA/NESDIS/NCDC



# PALCI Disaster Planning Survey Report





# Some things to ask yourself:

- What threats are most common in your area?
- What threats are the most common to your institution?
- What are the major collection concerns?



**Don't Forget about Internal Threats To Collections**

# What To Watch When Preparing to Recover From A Disaster

Mold

Debris

Unstable  
Shelving

Damaged Building Structures

Animals

STANDING WATER

Insects

Fallen Electrical Wires





# Not All Threats Are Natural















**Miriam Meislik**  
**Media Curator\Archives Service Center\University**  
**Library System**  
**and**  
**Lecturer\School of Information Science**  
**University of Pittsburgh**  
**7500 Thomas Blvd.**  
**Pittsburgh, PA 15260**  
**412-648-3096**  
**[miriam@pitt.edu](mailto:miriam@pitt.edu)**

